

# Hour meter

HK 46



## Highlights

- price competitive meter
- excellent quality
- long lifetime
- different bezels for different cut-outs
- many mounting versions
- all necessary approvals
- your branding available

## Applications

- gen-sets
- compressors
- pumps
- medical equipment
- control panels
- air conditioning

## Mechanical data

Front dimension: 48 x 48 mm

Display AC: 5 integers, 2 decimals  
DC: 6 integers, 1 decimal  
AC indicator, without reset

Digit height 4 mm

Digit color integer: white on black  
decimal: 50 Hz – red on black  
60 Hz – red on white

Counting range AC: 99999,99 h, DC: 999999,9 h

Reading accuracy AC: 1/100 h (36 sec)  
DC: 1/10 h (6 min)

Weight ca. 50 g

Housing color standard black

Bezels 52x52  
55x55  
72x72 and Ø80 mm

Mounting options A - aluminum clamp  
C - anti-vibration boot & clamp  
D - DIN rail  
F - snap fastener  
G - retainer

## Electrical data

Operating voltage 24, 48, 60, 110, 120, 220, 230, 240,  
400 VAC ± 10%, 50 or 60 Hz

Current consumption AC: max. 8 mA  
DC: max. 9 mA

Accuracy AC: ± 0,02 %  
DC: ± 0,002 %

Connection flat pin 6,3x0,8 with screw  
flat pin 6,3x0,8  
screw terminal

## Ambient conditions

Operating temperature AC: -25° C .. +80° C  
DC: -20° C .. +70° C

Storage temperature AC: -40° C .. +80° C  
DC: -20° C .. +70° C

Relative humidity max. 80% at +25° C

Protection IP40 front  
IP65 front (on request)  
IP20 terminals

Approvals CE Mark  
UL E171200

RoHS compliant

## Ordering

HK 46 . x x / x x x / x x

### Mounting

A - aluminum clamp  
C - anti-vibration boot & clamp  
D - DIN rail  
F - snap fastener  
G - retainer

### Front dimension

1 – 48x48 mm  
2 – 55x55 mm  
3 – 72x72 mm  
5 – 52x52 mm  
6 - Ø80 mm

### Front protection

1 – IP40  
3 – IP65

### Connection

1 – flat pin 6,3x0,8 with screw  
2 – flat pin 6,3x0,8  
3 – screw terminal

### Package

P – single  
S – group

### Voltage (specify)

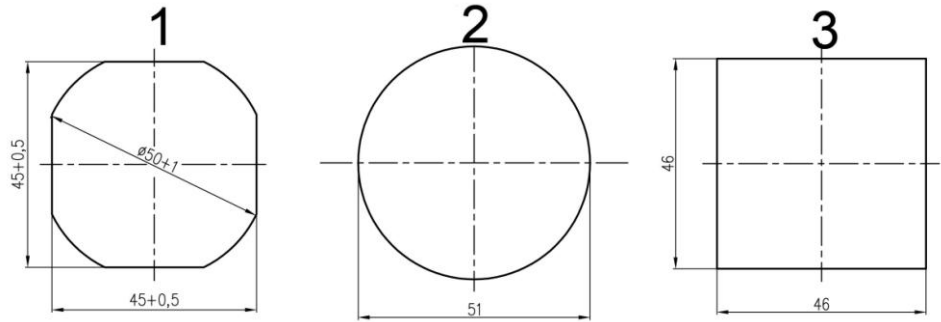
24, 48, 60, 110, 120,  
220, 230, 240, 400 VAC  
6-30, 10-80, 110, 220  
VDC

### Frequency

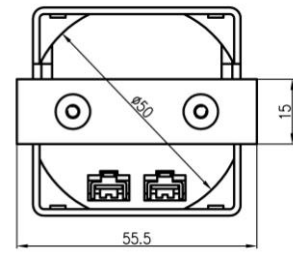
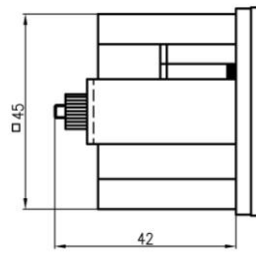
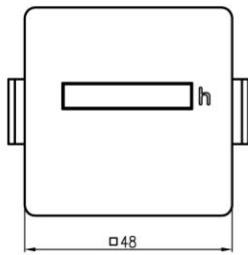
50 Hz  
60 Hz

# Hour meter

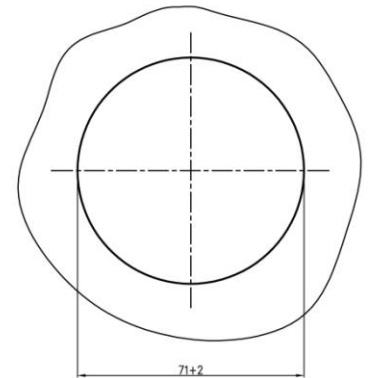
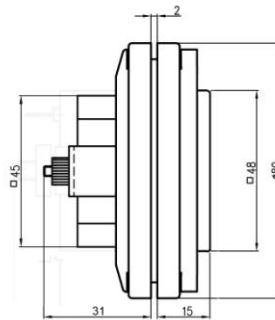
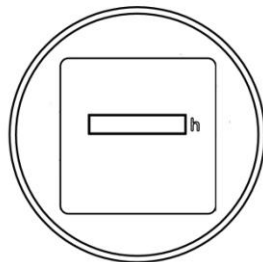
## HK 46 Panel cut-outs



Cut-out #1: for meters with front dimensions 48x48 mm (without bezel)  
 Cut-out #1,#2,#3: for meters with square 52, 55 and 72 mm bezels

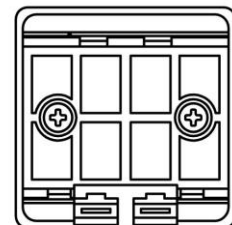
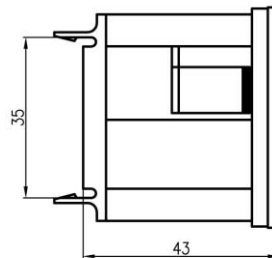
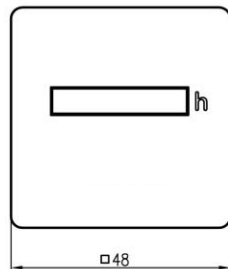


## HK 46 – mounting A



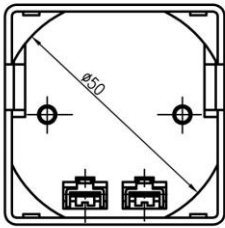
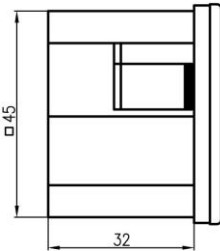
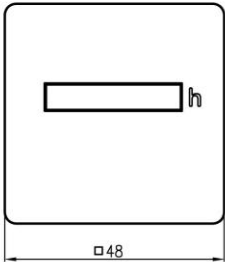
panel cut-out

## HK 46 – mounting C



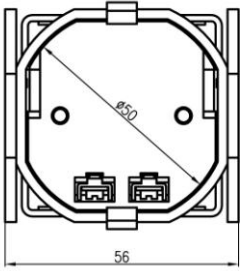
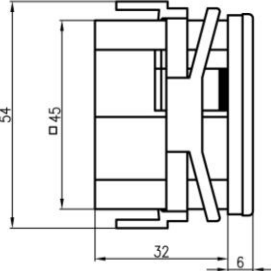
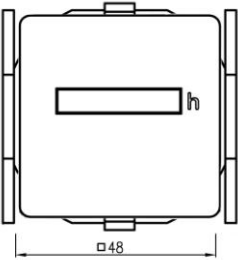
## HK 46 – mounting D

# Hour meter



HK 46 – mounting F

---



HK 46 – mounting G

---